

徐州徐工矿业机械有限公司
XUZHOU XCMG MINING MACHINERY CO LTD

本手册最终解释权归徐州徐工矿业机械有限公司所有。
2023年3月 发行
XCMG Mining Machinery Co LTD reserves the right of final interpretation of this manual.
It will be released in March 2023

地址：江苏省徐州市和平大道169号
Add: No 169,Heping Avenue,
Xuzhou City,Jiangsu Province,
R,P,CHINA

客服热线：400-110-9999 / 0516-8311 3333
电话：0516-8311 3888 传真：0516-8311 3222



官网二维码



微信二维码



视频号二维码



抖音二维码



每公里节约
成本约8元



每年降低碳排放
约100吨



每月收益
高于油车40%



三年净收益
高于油车30%



降本降耗 增收增效



XDR80TE 纯电动矿用自卸车

XDR80TE PURE ELECTRIC MINE DUMP TRUCK

额定载重 72 T
最高车速 43 kW · h
电机功率 500/800 kW
电池容量 525/700 kW · h

徐州徐工矿业机械有限公司
XUZHOU XCMG MINING MACHINERY CO LTD

动力先锋 洁能专家

REINFORCED IRON

电池 BATTERY

配置宁德时代磷酸铁锂水冷电池包，安全可靠，环境适应性强，总电量可达525/700kW·h，防护等级可达到IP68（防尘防水等级标准的最高级别）。配置高效智能能量回收系统，优化算法，最大程度提高整车续航里程。

Lithium iron phosphate water-cooling battery pack from CATL is safe and reliable, enjoys high environmental suitability, and can reach a total electric quantity of 525/700 kW·h and protection class of IP68. Effective and intelligent energy recovery system and optimization algorithms can maximize the endurance mileage.

电机 MOTOR DRIVE SYSTEM

双电机驱动系统，动力强劲；匹配AMT变速箱，换挡平顺。动力总成技术先进，高效节能。驱动电机免维护，变速箱保养成本低。电机散热器及风扇，风量大、功耗低，抗震能力强、延长使用寿命。全天候热电池热管理系统，采用电膜加热、水冷机组及风冷散热等多种温控技术，适用高海拔（4000米以上）、极寒（-22℃）、极热（44℃）天气。

Dual-motor drive system provides strong power. AMT transmission has smooth gear shifting experience. The power assembly that borrows advanced technologies is efficient and energy-conserving. The drive motor is maintenance-free and the transmission has a low maintenance cost. Motor radiator and fan are featured with large air volume, low power consumption, good shock resistance and convenient maintenance. The all-weather thermal battery thermal management system adopts a variety of temperature control technologies such as electro film heating, water cooling unit and air cooling heat dissipation. It is suitable for high altitude (4000m) and extremely cold (-22℃) and hot weather (44℃).



充电 CHARGE

525kW·h机型配备双枪充电系统，最大充电电流可达400A，90分钟即可实现满电。700kW·h机型配备四枪充电系统，最大充电电流达1000A，60分钟即可实现满电。（国内首创，缩短充电时间，提高运营效率）制动和能量再生系统：重载下坡坡度达到10%时，可实现无限续航。



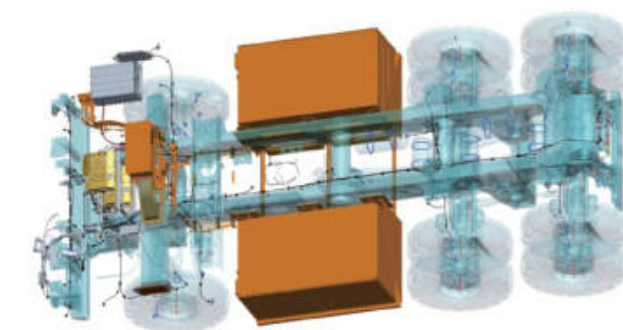
The 525kW·h model is equipped with a dual-gun charging system. The maximum charging current can reach 400A, and it can be fully charged in 90 minutes. The 700kW·h model is equipped with a four-gun charging system with a maximum charging current of 1000A, which can be fully charged in 60 minutes. (It is the first in China to shorten charging time and improve operation efficiency.) Braking and energy regeneration system: Theoretical emphasis on the downhill slope up to 10%, can achieve unlimited endurance.



集成化的电器系统 AN INTEGRATED ELECTRICAL SYSTEM

电器系统由驾驶室电器模块、高压电器模块、车架电器模块、称重电器模块以及甲板电器模块组成，具有集成程度高，安全性高、安装维修便捷等优点。

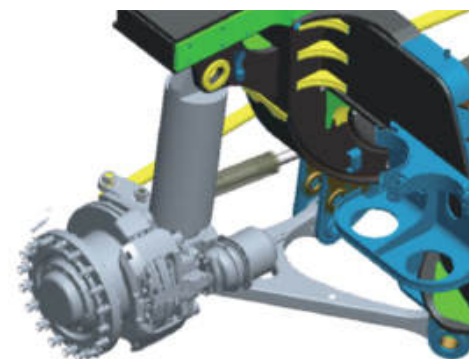
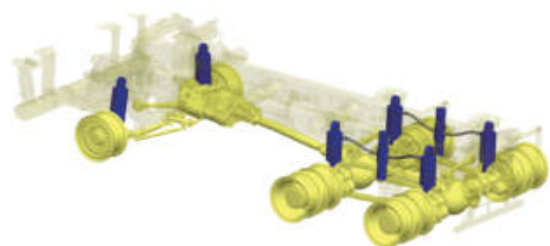
The electrical system is composed of cab electrical module, high voltage electrical module, frame electrical module, weighing electrical module and deck electrical module. It has the advantages of high integration, high safety, convenient installation and maintenance.



“钢筋”-悬架系统 TO SHOULDER HEAVY RESPONSIBILITIES

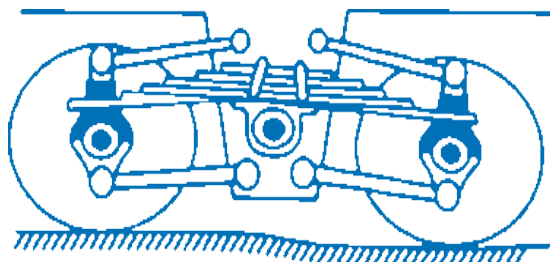
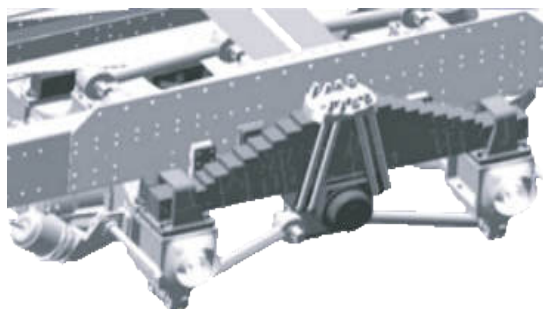
全球首创三桥式刚性矿车

THE WORLD'S FIRST THREE-BRIDGE RIGID MINING DUMP TRUCK



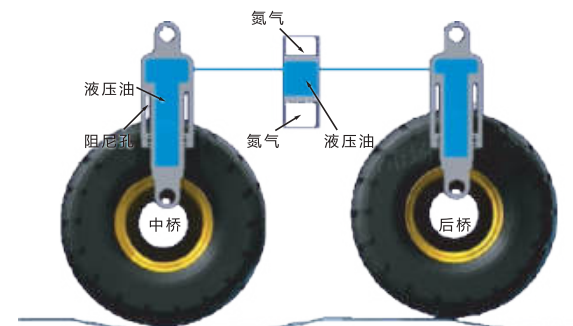
全球首创三桥式刚性矿车，采用全油气悬架系统。具有优良的减振缓冲性能，降低整机振动。采用高低压双气室蓄能器，空载和满载都具有极佳的缓冲性能。前桥为独立悬架，左右车轮跳动互不影响，减少轮胎侧滑磨损，越障路况车身不易倾斜，配合断开式转向梯形结构，转向误差小。

宽体车中后桥悬架结构



The world's first three-bridge rigid wide-body dump truck, using the whole hydro-pneumatic suspension system. With excellent damping and buffering performance, reduce the vibration of the whole machine. High and low pressure double chamber accumulator, no load and full load have excellent buffering performance. The front axle is independent suspension, the left and right wheels do not affect each other, reduce the tire slip wear, the body is not easy to tilt over the road condition, with the broken open steering ladder structure, small steering error.

徐工三桥刚性矿车中后桥悬架结构



30%↓
平均应力水平降低

50%↑
寿命提高

车架设计

FRAME DESIGN

全焊接车架抗疲劳优化技术。车架的横梁与纵梁构成封闭结构；纵梁为箱型截面结构，横梁为抗扭管形式，可以消除弯曲和开裂应力集中源；车架采用优质低合金高强度钢制造，重要焊缝100%经超声波探伤。整体应力水平比宽体车行业低70%，关键焊缝全熔透焊接，100%探伤，保证抗疲劳性能，避免车架3年内开裂问题。在国内外主流矿区实现了90%以上的出勤率。

Anti-fatigue optimization technology of all welded frame. The beam and longitudinal beam of the frame constitute a closed structure; The longitudinal beam is a box section structure, and the beam is a torsional tube, which can eliminate the concentrated source of bending and cracking stress. The frame is made of high quality low alloy high strength steel, and the important welds are 100% inspected by ultrasonic. The overall stress level is 70% lower than that of the wide-body car industry. The key welds are fully fused and welded, and the flaw detection is 100% to ensure the anti-fatigue performance. More than 90% attendance in mainstream mining areas at domestic and abroad.

铁骨-刚硬货厢

REINFORCED
IRON

铁骨-刚硬货箱

BODY

采用轻量化设计，货箱底板、侧板均选用高强度耐磨钢，抗开裂抗变形抗胀箱，使用寿命更长。货箱两侧边板和前面板均有厚实的加强筋加固。






With lightweight design, the bottom plate and side plate of the cargo box are made of high wear-resistant steel, which is resistant to cracking, deformation , swelling and has a longer service life. Both side panels and front panels of the container are reinforced with thick reinforcement bars.

标配

平底带尾门货箱

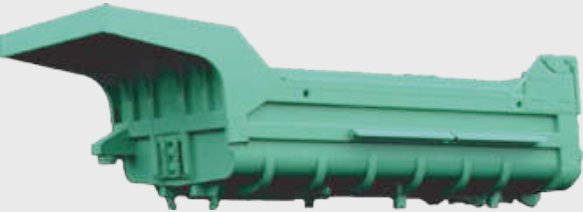


车斗类型	土方斗-方厢				
用途	运土或砂石(硬岩占比不超过30%)				
容积(m³)	堆装	45	49	51	54
内廓尺寸(mm)	长	6070	6070	6070	6070
	宽	3900	3900	3900	3900
	高	1400	1600	1750	1800
物料特性		松散密度≤1.81t/m³ (土石混合物)	松散密度≤1.62t/m³ (粘土、小颗粒石头)	松散密度≤1.50t/m³ (沙土)	松散密度≤1.44t/m³ (沙土、煤)
适用工况					



选配

带尾门货箱



车斗类型	土方斗-圆弧形	
用途	运土或砂石(硬岩占比不超过30%)	
容积(m³)	堆装	53
内廓尺寸(mm)	长	6070
	宽	3740
	高	2025
物料特性	松散密度≤1.44t/m³ (沙土、煤)	
适用工况		

选配

翘尾无尾门货箱(岩石斗)



车斗类型	岩石斗-方厢	
用途	运石头	
容积(m³)	堆装	3242
内廓尺寸(mm)	长	66326652
	宽	37003700
	高	12701690
物料特性	松散密度≤2.38t/m³ (赤铁矿、致密铜铁矿)	
适用工况	乌海/西藏等	

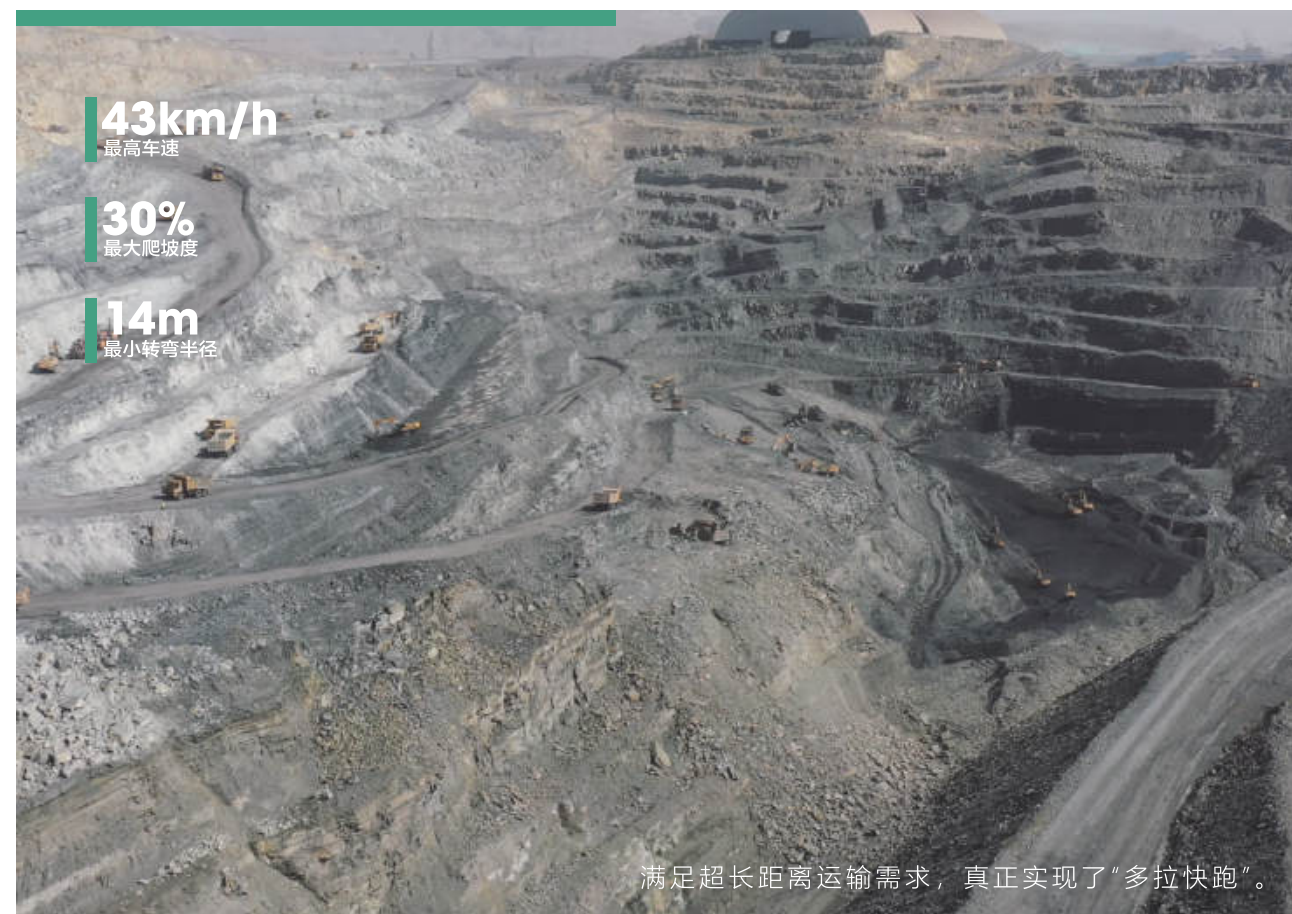
任重 TASK WEIGHT

XDR80TE 配备载荷秤重系统，用来监测和记录上载净载荷信息，在驾驶室仪表盘上及车辆两侧显示实时重量，可实现故障自检和报警记录。帮助用户优化装车质量管理，提高车辆装载效率，保证驾驶安全性。

XDR80TE is equipped with load weighing system, which is used to monitor, record and upload net load information, display real-time weight on the cab dashboard and on both sides of the vehicle, which can realize fault self-test and alarm record. Help users optimize loading quality management, improve vehicle loading efficiency and ensure driving safety.



道远 LONG WAY



高产高效 新锐节能 COMFORTABLE AND SAFE

增收增效 COMPREHENSIVE RELIABILITY

凭借全焊接抗疲劳车架和全油气悬架的核心技术，XDR80TE 保持着80吨级矿用自卸车运输的领航地位，综合使用成本的大幅降低。徐工 XDR80TE 已成为推动实现“绿色矿山”的重要动力。

Improve efficiency: With the core technology of all-welded frame anti-fatigue frame and all-oil-gas suspension, XDR80TE is lead role of 80 tons dump truck, greatly reducing the comprehensive use cost. XDR80TE has become an important driving force to promote the realization of "green mine".

降本降耗 IMPROVE TRANSPORTATION EFFICIENCY

运输环节是露天开采成本中最重要也是占比最多的组成部分，其中燃油占据了三桥矿用自卸车54%的运营成本，使用XDR80TE最高可实现节约百分之50%，在重载下坡10%坡度的特殊条件下，可以实现无限续航。

Transportation link is the most important part of open-pit mining cost, and fuel occupies 54% of the operating cost of Sanqiao mining dump truck. Instead, XDR80TE can be used to save up to 50%. Under the special conditions of 10% slope of heavy load downhill, unlimited endurance can be realized.



高端配置 舒适驾乘 COMFORTABLE AND SAFE

自动润滑系统 AUTOMATIC LUBRICATION SYSTEM



自动润滑系统定期润滑各部件，减少保养时间，降低维修成本。

Automatic lubrication system regularly lubricates components, reducing maintenance time and maintenance costs.

操作系统完善 OPERATING SYSTEM PERFECT



采用树脂工艺的中控台，配有11英寸液晶显示大屏，各项参数一目了然。

Resin process of the center console, equipped with 11 inch LCD screen, all parameters at a glance.
Resin process center console with 11 - inch LCD screen.

内饰配置齐全 THE INTERIOR IS FULLY EQUIPPED



标配悬浮式座椅，尤其是在远距运输中，驾驶员操控更加舒适。配备电动风档雨刷及清洗器、加厚玻璃、冷暖空调，四季无忧。

Standard suspension seat, especially in long-distance transportation, driver control more comfortable. Equipped with electric windshield wiper and cleaner, thickened glass, heating and cooling air conditioning, four seasons worry free.

照明系统 LIGHTING SYSTEM



照明系统全部为LED灯,由前大灯、转向灯、轮廓灯、停车灯、倒车灯、维修灯等组成。照明与警示灯的位置合理，满足各种天气环境下作业时的照明与警示要求。

The lighting system is all LED lights, consisting of headlights, turn signals, contour lights, parking lights, reversing lights, maintenance lights, etc.

The location of the lighting and warning lights is reasonable to meet the lighting and warning requirements when working in various weather environments.

舒适驾驶室 COMFORTABLE BRIDGE

驾驶室设计采用ISO3471和 SAEISO3449/SAEJ1040标准，具有ROPS&FOPS防滚翻保护功能。可选配进口格拉默座椅、RESPA驾驶室增压系统，合理的人机工程设计保证驾驶室舒适性。采用水加热大功率空调，避免行业内使用的电加热使用高压电进驾驶室的安全隐患。

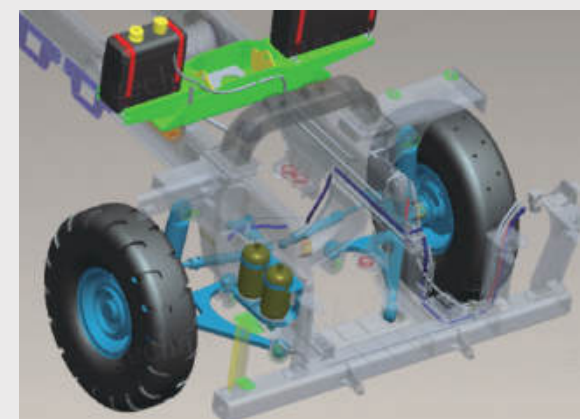
The cab design adopts ISO3471 and SAEISO3449/SAEJ1040 standards, with ROPS&FOPS protection against falling objects. Optional imported Grammer seats, RESPA cab booster system, reasonable ergonomic design to ensure cab comfort. Water heating and high power air conditioning are adopted to avoid the safety hazard of high voltage electric heating used in the industry into the cab.



转向 STEERING

配置全液压+应急转向，转向平稳、制动柔和、响应灵敏。解决行业目前车辆失去动力后只能紧急制动，不能转向的问题。配置转向蓄能器，当发动机发生故障时，可提供应急压力保证转向。

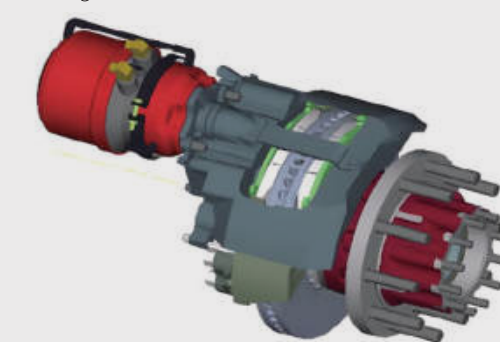
Equipped with Yuchai 580 horsepower engine, the whole machine is more reliable and fuel-efficient; Match with Faust gearbox to ensure smooth output of surging power. The upgraded post-treatment system, including exhaust purification muffler and urea injection system, meets national stage 4 emission targets.



制动 BREAKING

采用气动钳盘式及电辅助制动系统，制动稳定、安全可靠，结构简单，维修方便。配置制动电能回收系统，电机最大辅助制动功率800kW，制动更安全。

Using pneumatic clamp disc and electric auxiliary braking system, braking stability, safety and reliability, simple structure, easy maintenance. Equipped with braking energy recovery system, the maximum auxiliary braking power of motor is 800kW, making braking safer.



轮胎 TIRES

配备16.00R25全钢子午轮胎，整车离地间隙大，通过性好；承载能力强，使用寿命长。

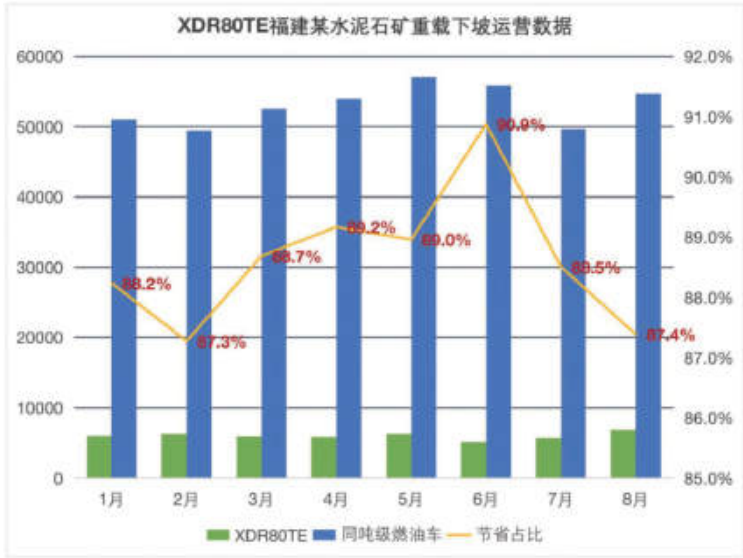
Equipped with 16.00R25 all-steel radial tires, the vehicle has a large ground clearance and good passability; the tires are basically free of overload and have a long service life.



高效运行

持续收益

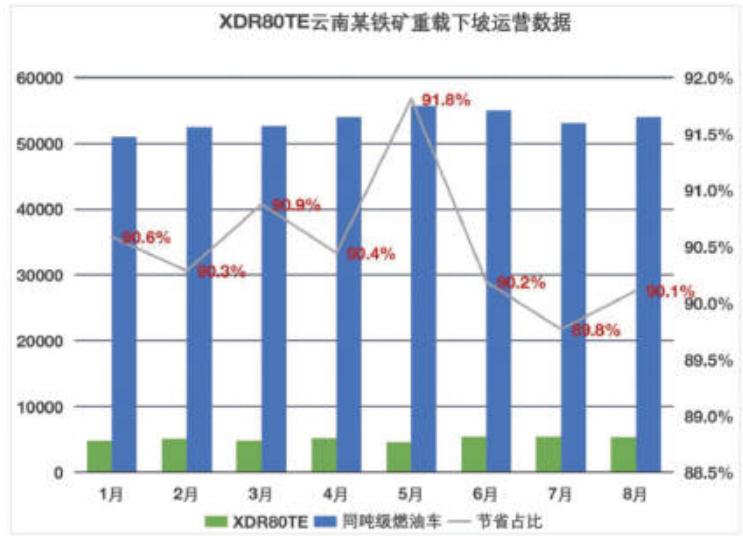
COMFORTABLE
AND SAFE



福建某水泥石矿
COMPREHENSIVE RELIABILITY

（重载下坡）根据施工现场反馈的数据在同工况以及同路况的条件下，XDR80TE每天的燃料成本仅为同吨位的20%，月度可省下5.5万元，五年XDR80TE净收益高出燃油车50%。五年相比于燃油车更是节约维保费用74000元。

(Heavy duty downhill) According to the feedback data from the construction site, the fuel cost of XDR80TE is only 20% of the same tonnage under the same working condition and road condition, and 55,000 yuan can be saved monthly. In five years, the net income of XDR80TE is 50% higher than that of the fuel vehicle. In five years, it will save 74,000 yuan in maintenance premiums compared with fuel cars.



云南某铁铜矿
IMPROVE TRANSPORTATION EFFICIENCY

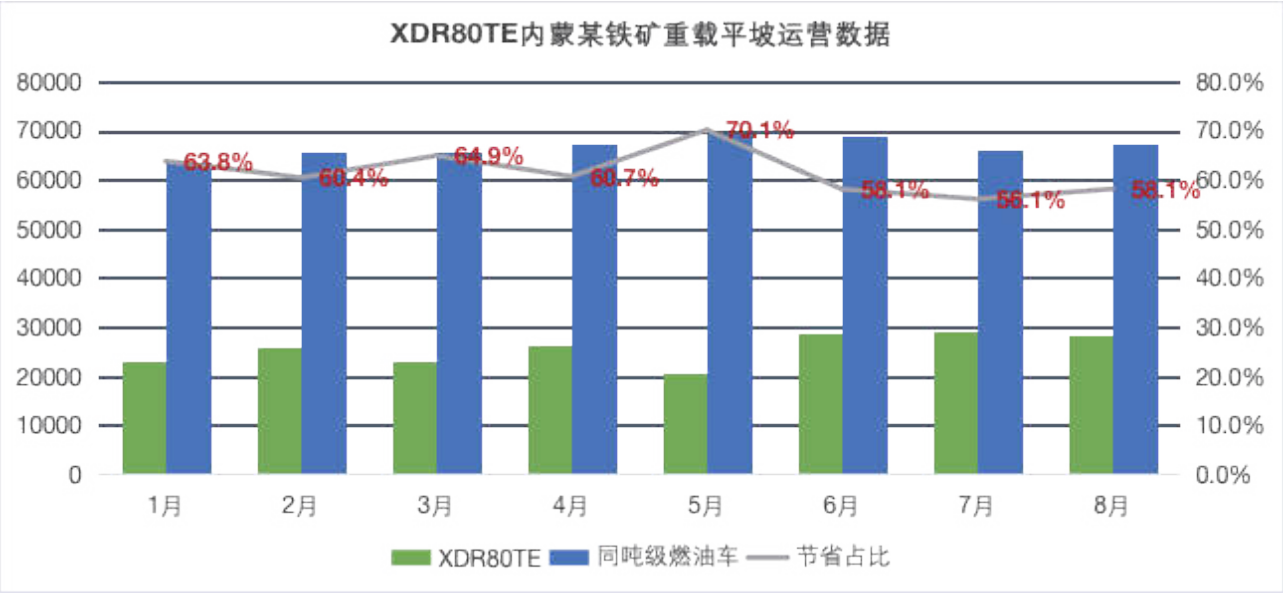
（重载下坡）三公里重载下坡工况，平均坡度8%，每天仅需充一次电，可运行20趟，电费200元。同一工况下，柴油车完成同样的作业量需要燃油230L，费用约1700元。电车年度节省能耗高达47万。

(heavy duty downhill) three kilometers of heavy duty downhill condition, the average slope of 8%, only one charge a day, can run 20 times, the electricity fee is 200 yuan. Under the same working condition, diesel vehicles need 230L of fuel to complete the same amount of operation, and the cost is about 1700 yuan. The tram saves up to 470,000 dollars a year.

内蒙古某铁矿
COMPREHENSIVE RELIABILITY

（重载平坡）0.5公里重载平坡工况，每天需充2次电，可运行60趟，电费500元。同一工况下，柴油车完成同样的作业量需要燃油300L，费用约2250元。电车年度节省能耗高达63万。

(Heavy-duty flat slope) 0.5km heavy-duty flat slope condition, it needs to be charged twice a day, can run 60 times, and the electricity charge is 500 yuan. Under the same working condition, diesel vehicles need 300L of fuel to complete the same amount of operation, and the cost is about 2250 yuan. The tram saves up to 630,000 yuan a year.



注：各地电价、燃油价格均存在差异，数据对比与当前实际会有差异

高效运行 持续收益

COMFORTABLE
AND SAFE

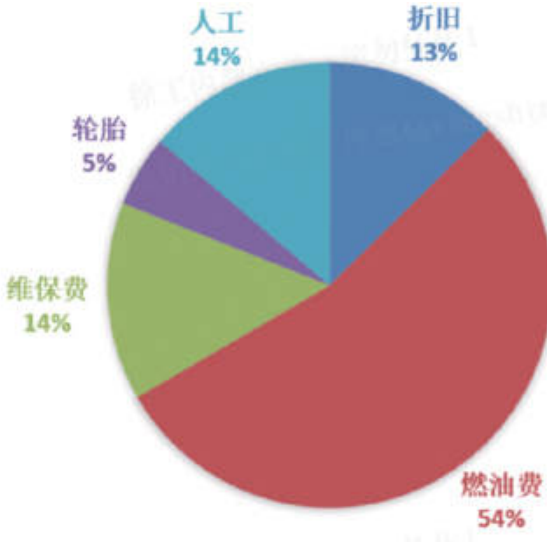
超长续航

COMPREHENSIVE RELIABILITY

燃油车油耗费用占比超50%，采用电车最低可节省20%，重载下坡10%坡度，理论可实现无限续航；
5年可节省维保费用约8万元（机油机滤及发动机大修等）。

Fuel vehicle fuel consumption accounts for more than 50%, the use of tram can save 20% at least, heavy load downhill 10% slope, theory can realize unlimited endurance;
5 years can save about 80,000 yuan maintenance premium (oil filter and engine overhaul, etc.).

三桥刚性矿车运营成本分析



	运距 (km)	路 况	实载方量 (m³)	电 耗 (度)	吨 公 里 能 耗	吨 公 里 成 本 / 元
XDR80TE	2.937	1.835km (平均坡度3.8%)	53	54.8	0.19 (度/吨公里)	0.087
传统燃油车		+ 1.102km 平路	35	12升	0.068 (度/吨公里)	0.38



增收增效

IMPROVE TRANSPORTATION EFFICIENCY

凭借全焊接抗疲劳车架和全油气悬架的核心技术，XDR80TE 保持着80吨级矿用自卸车运输的领航地位，综合使用成本的大幅降低。徐工XDR80TE已成为推动实现“绿色矿山”的重要动力。

Improve efficiency: With the core technology of all-welded frame anti-fatigue frame and all-oil-gas suspension, XDR80TE is lead role of 80 tons dump truck, greatly reducing the comprehensive use cost. XDR80TE has become an important driving force to promote the realization of "green mine".



	斗 容		货 箱 容 积
XE700DF	4.6m³(土方)	XDR70T	38m³
	5.0m³(松散)		50m³
XE800D	5.2m³(土方)	XDR80T	44~51m³
	5.6m³(松散)		53~54m³
X950DA XE1250	6.0m³(土方)	XDR90T	50~53m³
	8.5m³(松散)		55~60m³

成本收益分析		XDR80TE-525	XDR80T
工作天数		300	
每趟收益	每趟收入：元	166. 6	166. 6
	电价/ 油价	0. 67	7. 5
	单趟能耗：度或升	15	8. 3
	单趟能耗：元	10. 05	62. 48
	收入：元	157	104
每月收益	每天趟数：次	40	42
	每月收入：元	156550	109331
	每月维保：元	1800	2700
	人员工资：元	24000	24000
	轮胎：元	13000	13000
	每月净收入：元	117750	69631
年度收益	第一年净收入：元	1413000	835575
	第二年净收入：元	1270698	727537
	第三年净收入：元	1132201	617827
	第四年净收入：元	1132201	617827
	第五年净收入：元	1132201	617827
五年收益合计：元		6080301	3416593

注：各地电价、燃油价格均存在差异，数据对比与当前实际会有差异



XCMG MINING MACHINERY'S COMMITMENT TO YOU

徐工矿机对您的承诺

Promise To You

“全心全域全服务”这是徐工矿机的服务理念。每台徐工矿用挖掘机都将获得全面的保护。同时，我们提醒您若在质量保证期内及保证期后需要维修时，可以联系驻矿服务工程师或徐工矿机特约

售后服务中心，因为只有这样才能得到徐工矿机的纯正零部件和全面良好的维修保养，并得到最满意的服务。

“Supplying all-round services in all regions with the whole heart”. This is the service concept of XCMG Mining Machinery. Every XCMG mining excavator will be fully protected. At the same time, we remind you that if you need repair service during and after the warranty period, you can

contact the service engineers stationed at the mine or the XCMG Mining Machinery special after-sales service centre, and only in this way can you get genuine XCMG Mining Machinery parts and comprehensive and good maintenance and repair, and the most satisfactory service.



说明:

本宣传册的信息和图形反映了截稿时(见配置表)部分机型的技术特点及配置标准，机型配置因型号不同而异(以实机为准)。本着产品不断发展的原则，我公司保留随时改变产品技术参数、选装件和颜色等权利，手册中部分图片是示意图，仅供参考，若图片与实物不符，以实物为准。本宣传册只是提供参考性信息，并不作为合同文件。欲了解详细资料，请与当地徐工矿机经销商联系。未经徐州徐工矿业机械有限公司授权，不得复制此宣传册内容。

Explanation:
The information and graphics in this brochure reflect the technical features and configuration standards of some models as of the deadline (see configuration table). The configuration varies according to the model (subject to the actual model). In line with the principle of continuous development of products, our company reserves the right to change the technical parameters, optional parts and colors of products at any time. Some pictures in the manual are schematic diagrams for reference only. If the pictures do not match the real ones, the real ones shall prevail. This brochure is for reference only and is not intended as a contract document. For more information, please contact your local Xugong mining machine dealer. Without the authorization of Xuzhou Xugong Mining Machinery Co., LTD, the content of this brochure shall not be reproduced.

性能参数/Performance Parameters

额定载重 Rated Payload	72000kg		
空载车重 Empty Weight	44000kg		
整车总质量 Gross Vehicle Weight	116000kg		
驱动形式 Drive Style	6×4		
最高车速 Max. Speed	43km/h		
最大爬坡度 Max. Gradeability	30%		
最小转弯直径 Min. Turning Diameter	28m		
重量分布 Weight Distribution	空载 Empty	前桥 Front 40%	中、后桥 Rear 60%
	满载 Loaded	前桥 Front 24%	中、后桥 Rear 76%
货厢标准容积 Body Capacity	2:1堆装 (Heaped SAE 2:1)		45m³
外形尺寸 (空载, 长×宽×高) Overall dimension (EMPTY, L×W×H)	9950×4250×4210mm		
驱动总成 Powertrain	EV430-4E300		
额定/峰值功率 Motor Rated/Peak power	500kW/800kW;560kW/800kW		
额定/峰值扭矩 Motor Rated/Peak torque	2737Nm; (535/800)*2Nm		
变速箱 Transmission	4E300		
主减速比 Differential Ration	4.625: 1		
轮边速比 Planetary	3.487: 1		
总速比 Total Reduction	16.086: 1		

主要部件/Main Parts

轮胎与轮辋 Tires And Rims

标准轮胎 Standard Tire	16.00R25
标准轮辋 Standard Rim	11.25/2.0

驾驶室 Cab

类型 Type	ROPS&FOPS驾驶室 ROPS&FOPS Cab
---------	----------------------------

制动系统 Brake System

类型 Type	气压盘式制动/辅助电制动 Pneumatic Disc Brake/Auxiliary Electric Brake
---------	--

悬架系统 Suspension

类型 Type	三桥全油气悬架系统 Hydraulic full suspension on all wheels
前悬架 Front Suspension	麦弗逊独立前悬架 McPherson, Hydro-pneumatic suspension
后悬架 Rear Suspension	油气平衡悬架 Hydro-Pneumatic Balanced Suspension

液压系统 Hydraulic System

转向 Steering	全液压转向系统，具备应急转向功能 Full Hydraulic Steering System, Emergency steering automatically applied by accumulator.
-------------	---

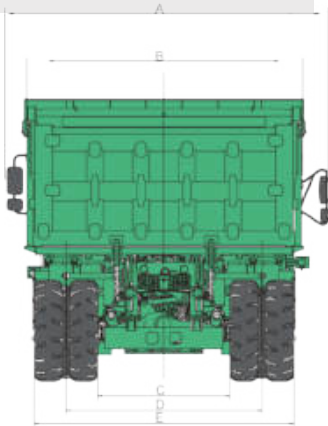
电气系统 Electrical System

24V

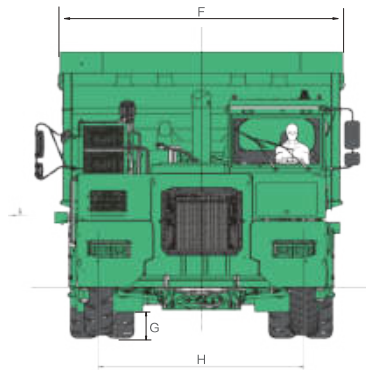
动力电池 Power battery	525/700kWh磷酸铁锂	525/700kWh lithium iron phosphate battery
充电模式 Charging mode	直流充电 DC charging	

TECHNICAL
PARAMETER

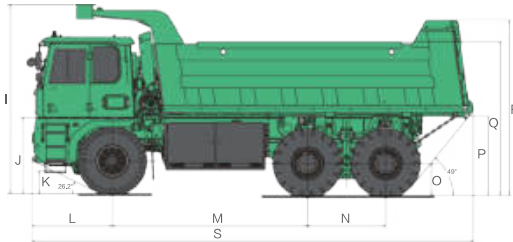
技术参数



A:4875 B:3900 C:2010
D:2980 E:3950



F:4250 G:426 H:3094



I:4210 J:1698 K:514 L:1766
M:4350 N:1750 O:737 P:1760
Q:3430 R:3910 S:9950