

6 CYLINDERS IN LINE - DIESEL CYCLE

331 kW (450 HP) @ 3000 rpm (A1)
 309 kW (420 HP) @ 3000 rpm (A2)
 272 kW (370 HP) @ 3000 rpm (B)
 258 kW (350 HP) @ 3000 rpm (C)

Specifications

Thermodynamic cycle		Diesel 4 stroke
Air intake		TCA
Arrangement		6L
Bore x Stroke	mm	104 x 132
Total displacement	l	6.7
Valves per cylinder	n.	4
Cooling system		liquid
Direction of rotation (viewed facing flywheel)		CCW
Engine management		by EDC (Electronic Diesel Control)
Injection system		Electronic Common Rail (E.C.R.)

Electrical system

Voltage	V	12
---------	---	----

Standard configuration

Flywheel housing	type	SAE 3
Flywheel size	inch	11 ½
Air filter		rear side
Turbocharger		Waste Gate (water cooled) Turbo with Aftercooler (TCA)
Heat exchanger		tube type
Exhaust gas - water mixer		-
Water charge tank		included
Fuel filter	n.	1 - left side
Fuel prefilter		included (loose)
Fuel pump		included
Oil filter	n.	1 - right side
Oil sump		aluminium
Oil vapours blow-by circuit		rear
Oil heat exchanger		built in the crankcase
Oil filler		by cylinder head cover
Starting motor		12V - 3kW
Alternator		12V - 90A
Engine stop device		by electronic central unit
Electrical wiring		with negative to ground connection
Painting	color	white "ICE"

Not included in the standard configuration

Battery - minimum capacity recommended		120 Ah
Battery - minimum cold cranking capacity recommended		900 A

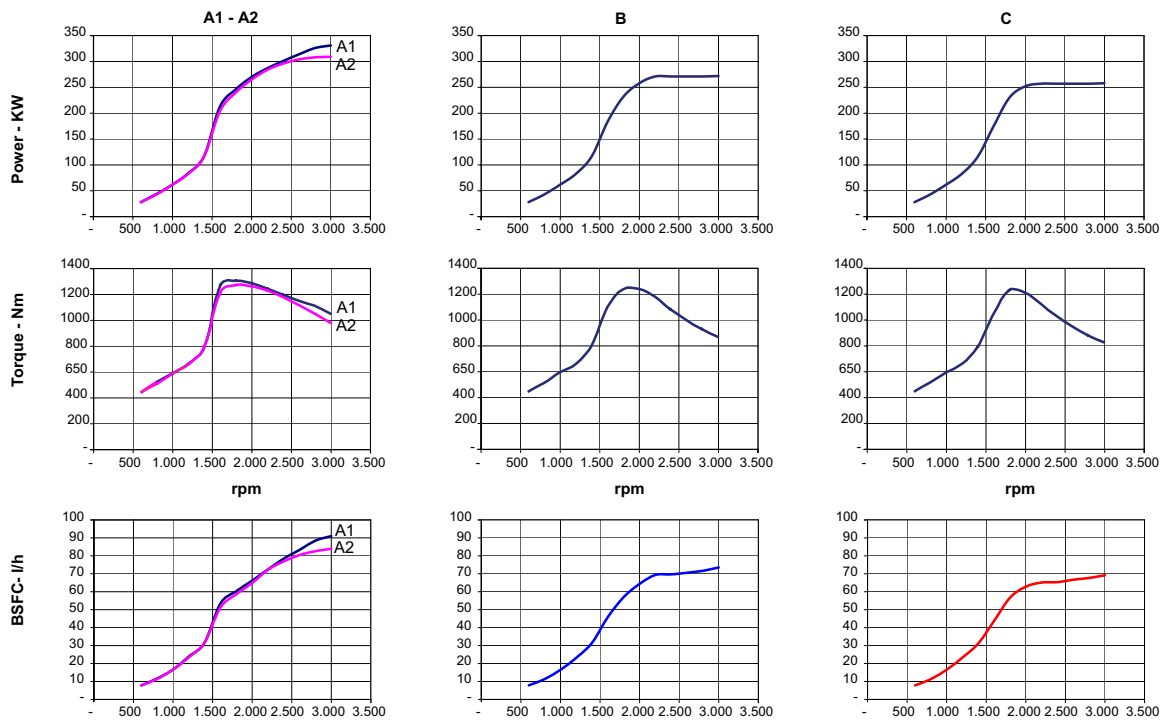
FPT OFFERS THE WIDEST AVAILABILITY OF ENGINE BUILD OPTIONS TO CUSTOMER SPECIFIC REQUIREMENTS WITHIN THE ENGINE SUPPLY. TO FIND OUT MORE ABOUT THE CONFIGURATIONS AND ACCESSORIES WHICH ARE AVAILABLE, CONTACT THE FPT SALES NETWORK.

N67 450

Rating type		A1	A2	B	C
Maximum power [*]	kW(HP)	331 (450)	309 (420)	272 (370)	258 (350)
At speed	rpm	3000	3000	3000	3000
Maximum no load governed speed at max rating	rpm	3150	3150	3150	3150
Minimum idling speed	rpm	600	600	600	600
Mean piston speed at rated speed	m/s	13.2	13.2	13.2	13.2
BMEP at max power	kg/cm ²	25.2	24.1	23.5	23.0
Specific fuel consumption at full load (best value)	g/kWh @ rpm	210 @ 1800			
Oil consumption at max rating	(% of fuel cons.)	≤ 0.2			
Minimum starting temperature without auxiliaries	°C	-10°			
Oil and oil filter maintenance interval for replacement	hours	600			

* Net Power at flywheel according to ISO 8665, after 50 hours running, Fuel Diesel EN 590. Power tolerance 5%.

Test conditions: 25 °C air temperature, 100 kPa atmospheric pressure, 30 % relative humidity.

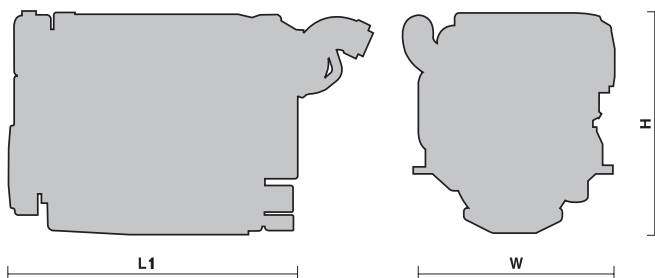


Fuel density = 840 g/l

A1 = High performance crafts.
A2 = Pleasure/commercial vessels:
 Full throttle operation restricted within 10% of total use period.
 Cruising speed at engine rpm <90% of rated speed setting - Maximum useage:
 - 300 hours per year (A1 service)
 - 1000 hours per year (A2 service).

B = Light duty:
 Full throttle operation restricted within 10% of total use period.
 Cruising speed at engine rpm <90% of rated speed setting - Maximum useage 1500 hours per year.

C = Medium duty:
 Full throttle operation <25% of use period.
 Cruising speed at engine rpm <90% of rated speed setting - Maximum useage 3000 hours per year.



L1 = 1089 mm.
 W = 724 mm.
 H = 788 mm.
 Dry weight (without marine gear) = 600 kg.