

6 CYLINDERS IN LINE - DIESEL CYCLE

206 kW (280 HP) @ 2800 rpm (A1)
 191 kW (260 HP) @ 2800 rpm (B)
 169 kW (230 HP) @ 2800 rpm (C)
 132 kW (180 HP) @ 2500 rpm (D)

Specifications

Thermodynamic cycle		Diesel 4 stroke
Air intake		TCA
Arrangement		6L
Bore x Stroke	mm	104 x 132
Total displacement	l	6.7
Valves per cylinder	n.	2
Cooling system		liquid
Direction of rotation (viewed facing flywheel)		CCW
Engine management		mechanical
Injection system		mechanical pump

Electrical system

Voltage	V	12
---------	---	----

Standard configuration

Flywheel housing	type	SAE 3
Flywheel size	inch	11.5
Air filter		rear side
Turbocharger		Fixed Geometry (water cooled) Turbo with Aftercooler (TCA)
Heat exchanger		tube type
Exhaust gas - water mixer		-
Water charge tank		included
Fuel filter	n.	1 - left side
Fuel prefilter		included (loose)
Fuel pump		included
Oil filter	n.	1 - right side
Oil sump		aluminium
Oil vapours blow-by circuit		rear
Oil heat exchanger		built in the crankcase
Oil filler		by cylinder head cover
Starting motor		12V - 3kW
Alternator		12V - 90A
Engine stop device		electronic excitation
Electrical wiring		with negative to ground connection
Painting	color	white "ICE"

Not included in the standard configuration

Battery - minimum capacity recommended		120 Ah
Battery - minimum cold cranking capacity recommended		900 A

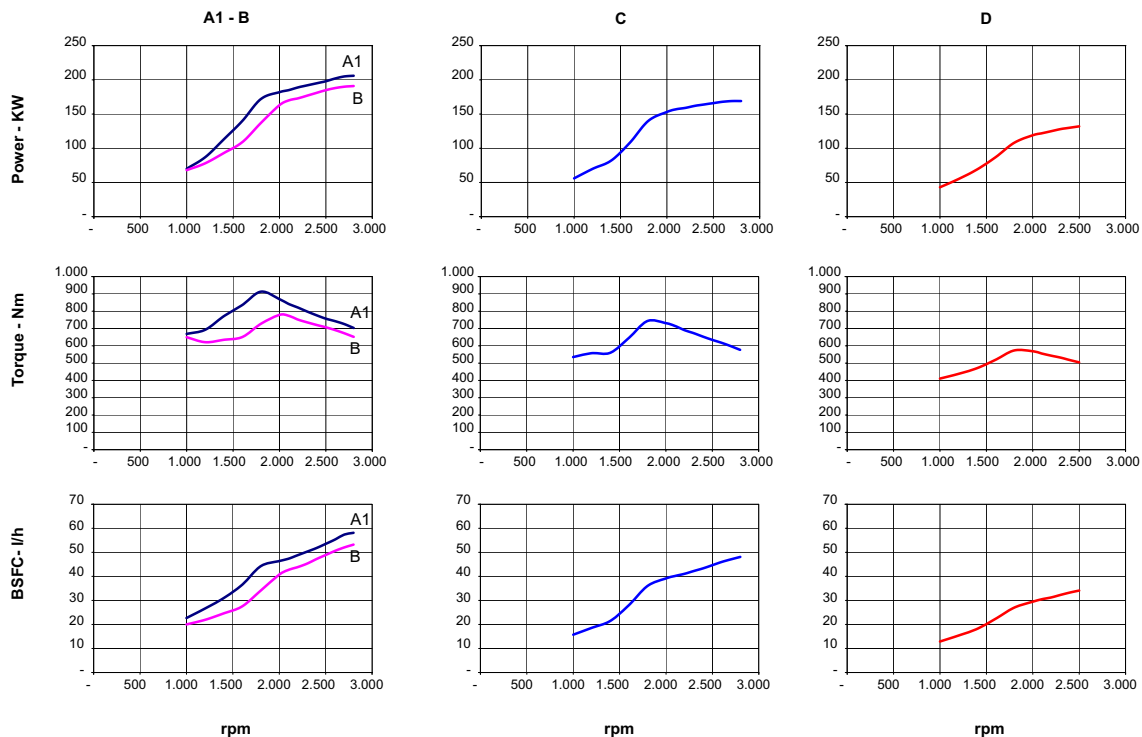
FPT OFFERS THE WIDEST AVAILABILITY OF ENGINE BUILD OPTIONS TO CUSTOMER SPECIFIC REQUIREMENTS WITHIN THE ENGINE SUPPLY. TO FIND OUT MORE ABOUT THE CONFIGURATIONS AND ACCESSORIES WHICH ARE AVAILABLE, CONTACT THE FPT SALES NETWORK.

N67 280

Rating type		A1	B	C	D
Maximum power [*]	kW(HP)	206 (280)	191 (260)	169 (230)	132 (180)
At speed	rpm	2800	2800	2800	2500
Maximum no load governed speed at max rating	rpm		3150		
Minimum idling speed	rpm	650			
Mean piston speed at rated speed	m/s	12.3	12.3	12.3	11.0
BMEP at max power	kg/cm ²	18.2	15.2	11.2	11.3
Specific fuel consumption at full load (best value)	g/kWh @ rpm	214 @ 2000			
Oil consumption at max rating	(% of fuel cons.)	≤ 0.2			
Minimum starting temperature without auxiliaries	°C	-15°			
Oil and oil filter maintenance interval for replacement	hours	600			

* Net Power at flywheel according to ISO 3046/1, after 50 hours running, Fuel Diesel EN 590. Power tolerance 5%.

Test conditions: 25 °C air temperature, 100 kPa atmospheric pressure, 30 % relative humidity.

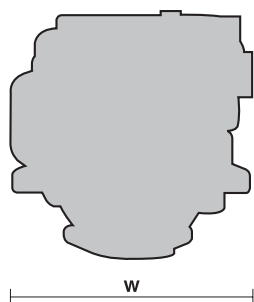
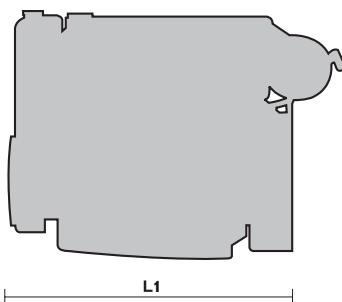


Fuel density = 840 g/l

A1 = High performance crafts.
 B = Light duty:
 Full throttle operation restricted within 10% of total use period.
 Cruising speed at engine rpm <90% of rated speed setting - Maximum useage:
 - 300 hours per year (A1 service)
 - 1500 hours per year (B service).

C = Medium duty:
 Full throttle operation <25% of use period.
 Cruising speed at engine rpm <90% of rated speed setting - Maximum useage 3000 hours per year.

D = Heavy duty:
 Maximum rating utilisation up to 100% of use period, for unlimited hours per year.



H

L1 = 1072 mm.
 W = 743 mm.
 H = 800 mm.
 Dry weight (without marine gear) = 605 kg.